

Genetic Lines of Wagyu in the U.S.

Charles T. Gaskins

Washington State University

Sources

- So Nagaoka – Japanese graduate student at WSU did research
- Printed information from Shane Lindsay
- <http://www.westholmewagyu.com.au/content/bloodlines/bloodlines.html>
- <http://crescentharborranch.com/lines.html>
- <http://lonemountaincattle.com/bloodlines.html>

Sources

The Explanation of Japanese Sire Bloodlines

Mr. Kenichi Ono

“Nihon Meigyū Hyakusen (Top 100 cattle in Japan)”

Publisher: Nikugyū Shinposha

Level 3, Acty Ace Area, 2-22-8 Nishisugamo,

Toyoshima-ku, Tokyo Postcode 170-0001

<http://www.blackmorewagyu.com.au/wagyu/pdfs/The-Explanation-of-Japanese-Sire-Bloodlines.pdf>

Basic Lines

- **Tajima (Tajiri, also Nakadoi)**
 - **Originated in the Tajima area of the Hyogo prefecture**
- **Fujiyoshi (Shimane)**
 - **Itozakara line developed in the Shimane prefecture**
- **Kedaka (Tottori) –**
 - **Formed in the Tottori Prefecture**

Basic characteristics

- Tajima (Tajiri) –
 - **highest marbling line**
 - **finely marbled beef**
 - **smaller frame**
 - **low birth weight**
 - **lower growth rates**
 - **good temperament**



Yasufuku

Kobe Beef and Matsuzaka Beef are famous names
Tajima line cattle are descendants of Tajiri, a sire born in 1939 in the Mikata District of the Hyogo Prefecture. This is a large, influential sire-line to which almost all strains within the Hyogo Prefecture are related.

Basic Characteristics

- Fujiyoshi (Shimane)
 - **well-balanced cattle**
 - **good growth rates**
 - **good meat quality**
 - **quiet temperament**
 - **strong maternal ability in dams**
 - **good fertility rates**



Dai 7 Itozakura

The bloodline started in the Tomada district of the Okayama Prefecture

Dai 7 Itozakura is probably the most famous of the Fujiyoshi line. He came from the Shimane district.

Basic Characteristics

Kedaka (Tottori)

good growth

larger frame type

good topline

overall balance

fine, loose skin

Dai 20 Hirashige



- **Descendants of the sire Kedaka born in 1959.**
- **Dai 20 Hirashige is an important sire of the Kedaka line.**
- **Semen is still used although the price is very high**
- **He gained 84.7 points as an "Ikushu-Taroku" bull which was the highest honor in Japan of the time.**
- **The number of registered sons of this bull is very high. These cattle were pack animals in the grain industry**

Imported Tajima Animals Descendents of Tajiri (1940)

Famous Sire	Bull
Yasutani Doi 202 (1976)	Fukutsuru 068
Yasutani Doi 202 (1976)	Yasufuku, Jr.
Kikunuri Doi (1956)	Kikuyasu 400
Kikunori Doi (1956)	TF Terutani
Kikunori Doi (1956)	Kitateruyasu-Doi 003

Imported Tajima Animals Descendents of Tajiri (1940)

Important Sire	Bull
Monjiro	Michifuku Haruki II
Yasutani Doi (1976)	Suzutani Rikitani Okutani
Kikunori Doi	Kitateruyasu-doi 003

Imported Fujiyoshi Animals

Famous Sire	Bull
Dai Nana Itozakura	Kikuhana Itohana Itomichi 1/2 Kinto
Kitaguni 7/8	Kitaguni, Jr.

Imported Kedaka Animals

Famous sire	Bull
Kedaka (1059)	ETJ001 Hirashige-Tayasu

Imported Cross Line Bulls

Original Line	Famous Sire	Bull
Tajiri	Yasutani Doi 202 (1976)	Yasutanisakura 931
Fujiyoshi	Dai Nana Itozakura	
Fujiyoshi	Dai Nana Itozakura	Itomoritaka – ETJ002
Kedaka	Kedaka	

Michifuku (Tajima)



Haruki II (Tajima)



Fukutsuru 068 (Tajima)



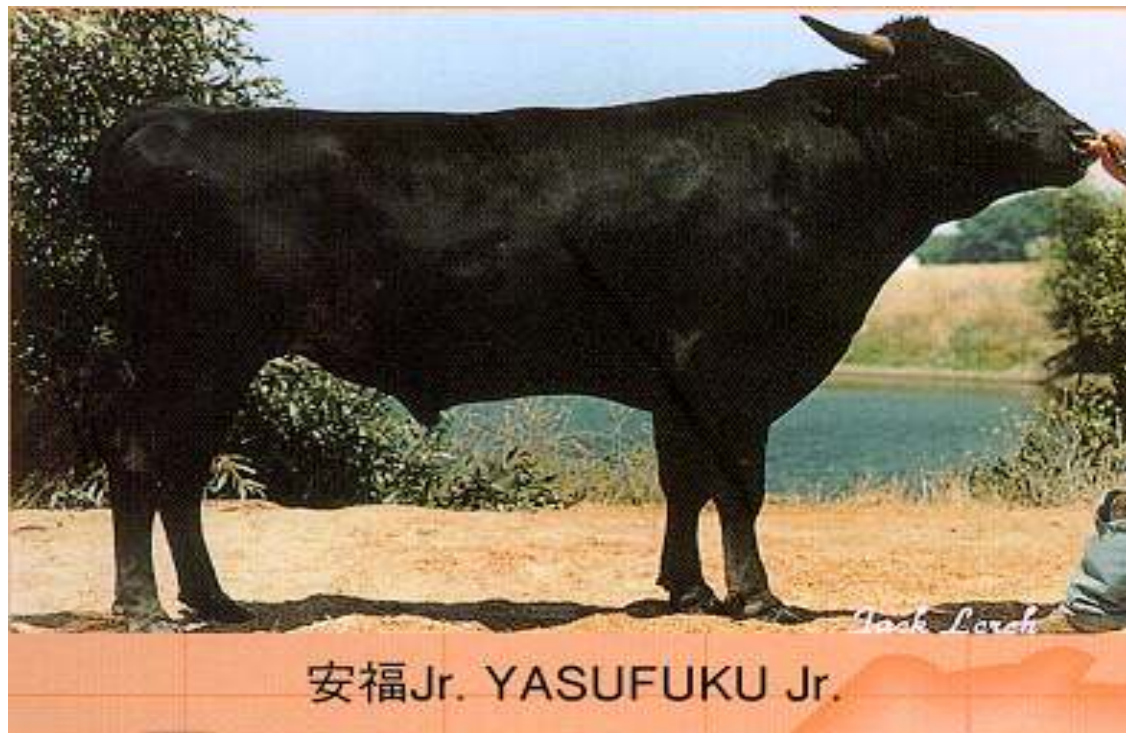
Westholme ETJ001 Hirashige – Tayasu Kedaka Line



**Westholme ETJ003
Kikuteruyasu-Doi 003
Tajima Line**



Yasafuku, Jr.



Yasufuku - Japanese sire Tajima Line



安 福

Terutani



Itohana



Kikuhana 037



Itomichi 1/2



JVP Bulls



Kikuyasu 400
(Tajima)

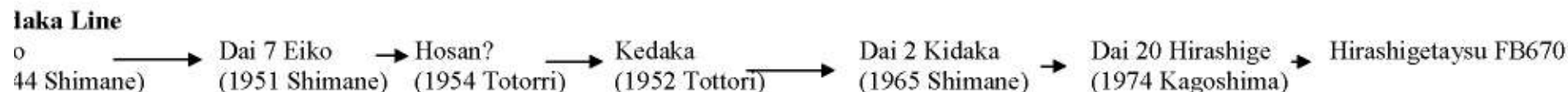
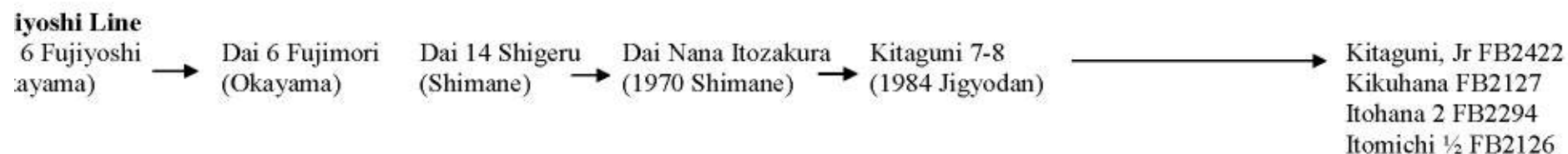
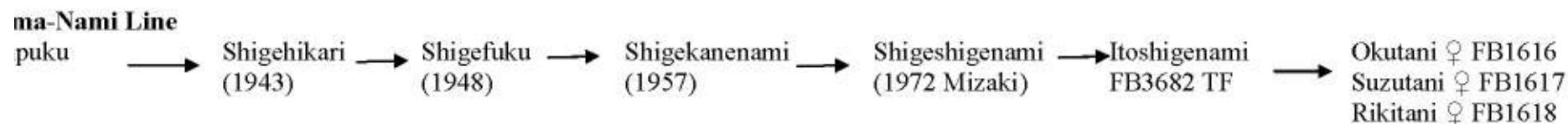
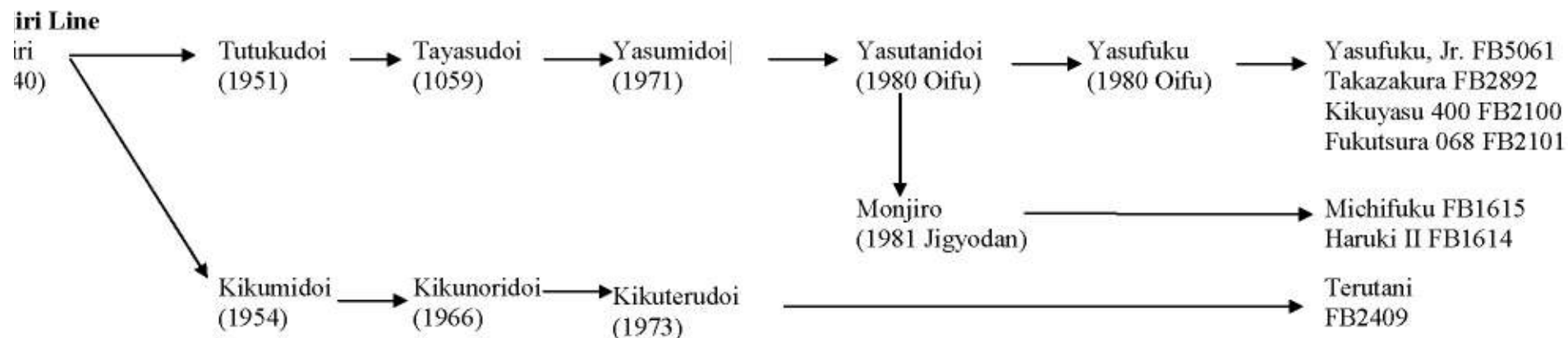


Yasutanisakura 931
(Tajima x Fujiyoshi)

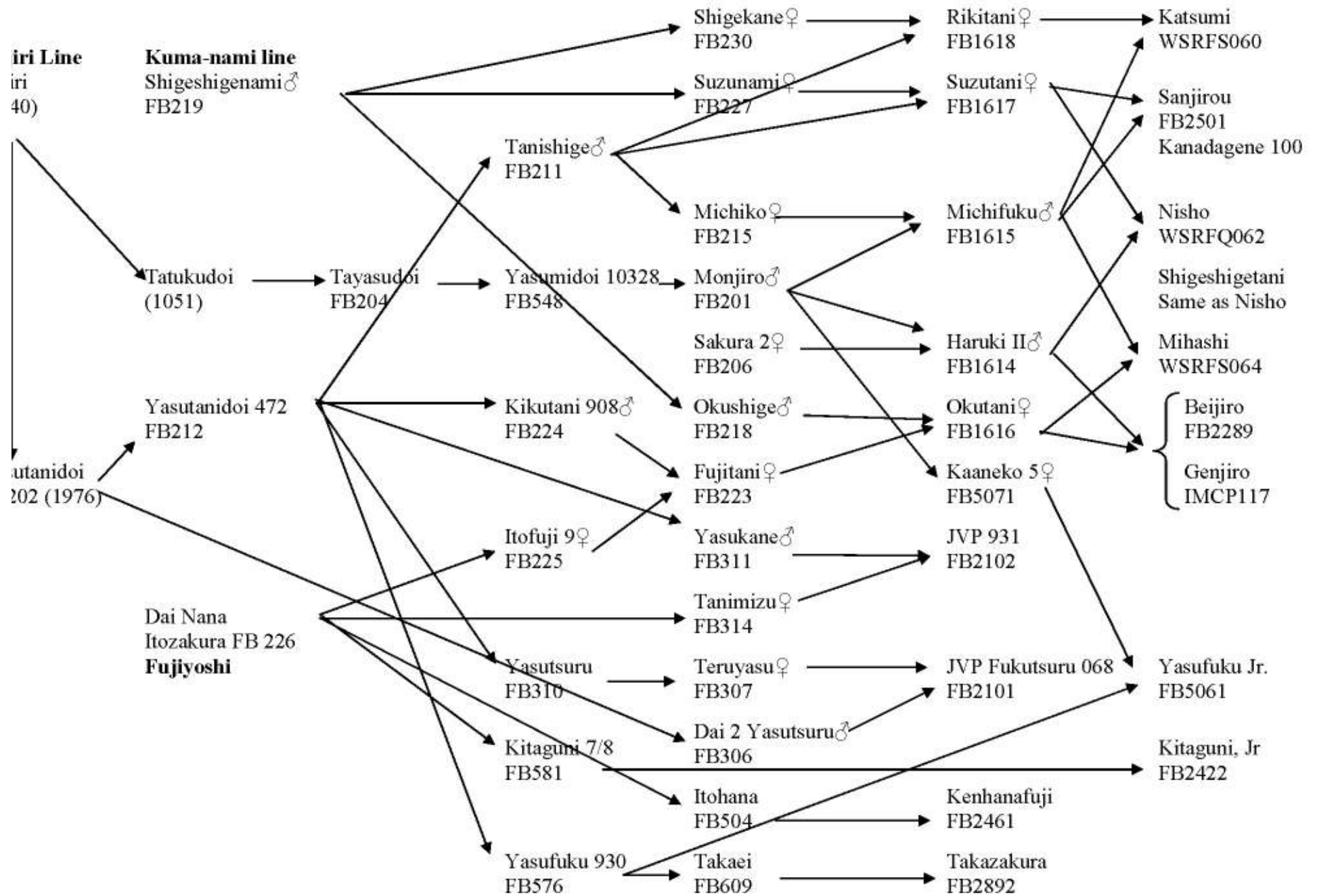
Westholme ETJ002
Itomoritaka
Fujiyoshi x Kedaka



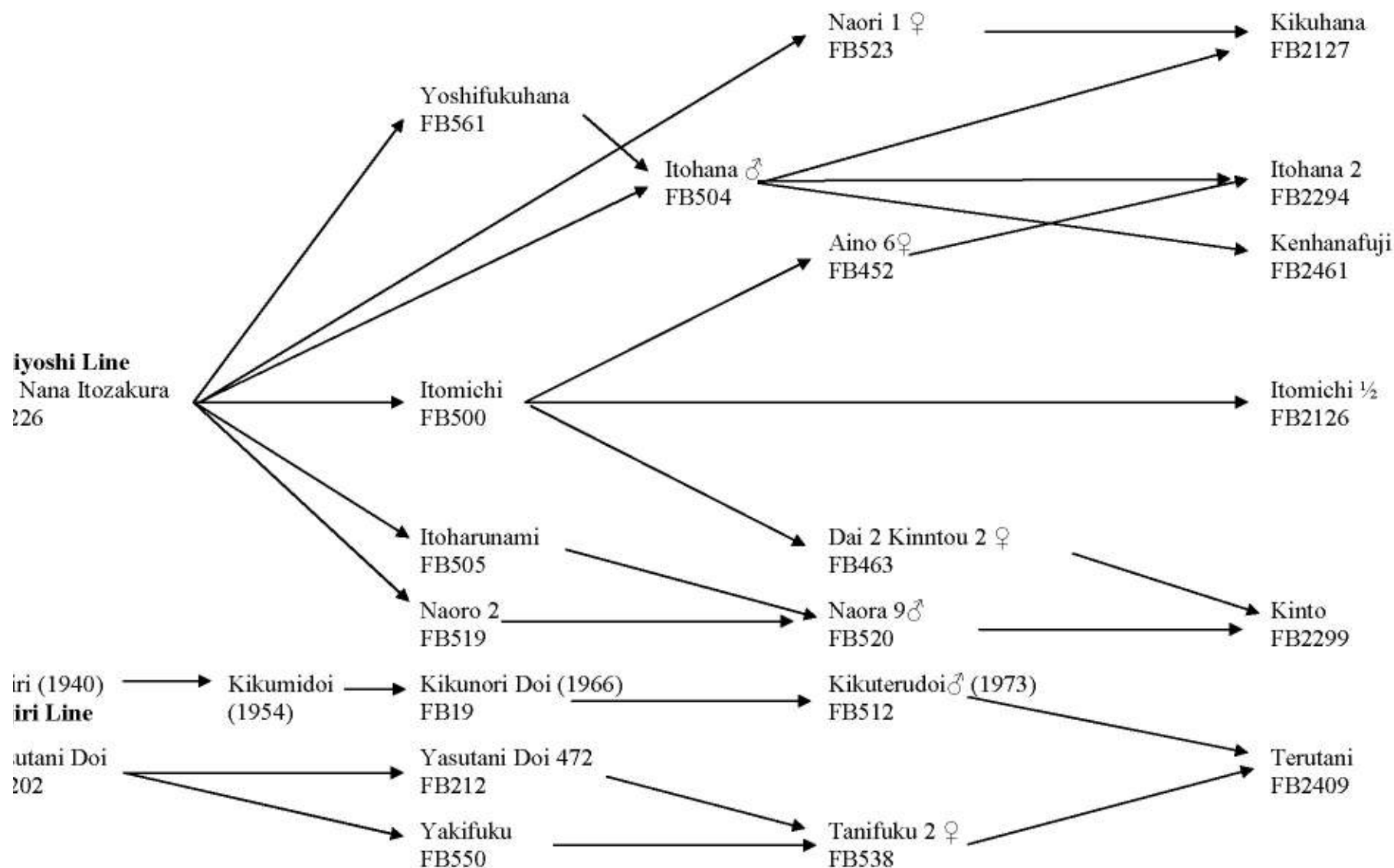
Trace Back of Wagyu Lines in Japan



Parentage and Relationships for World K's Bulls

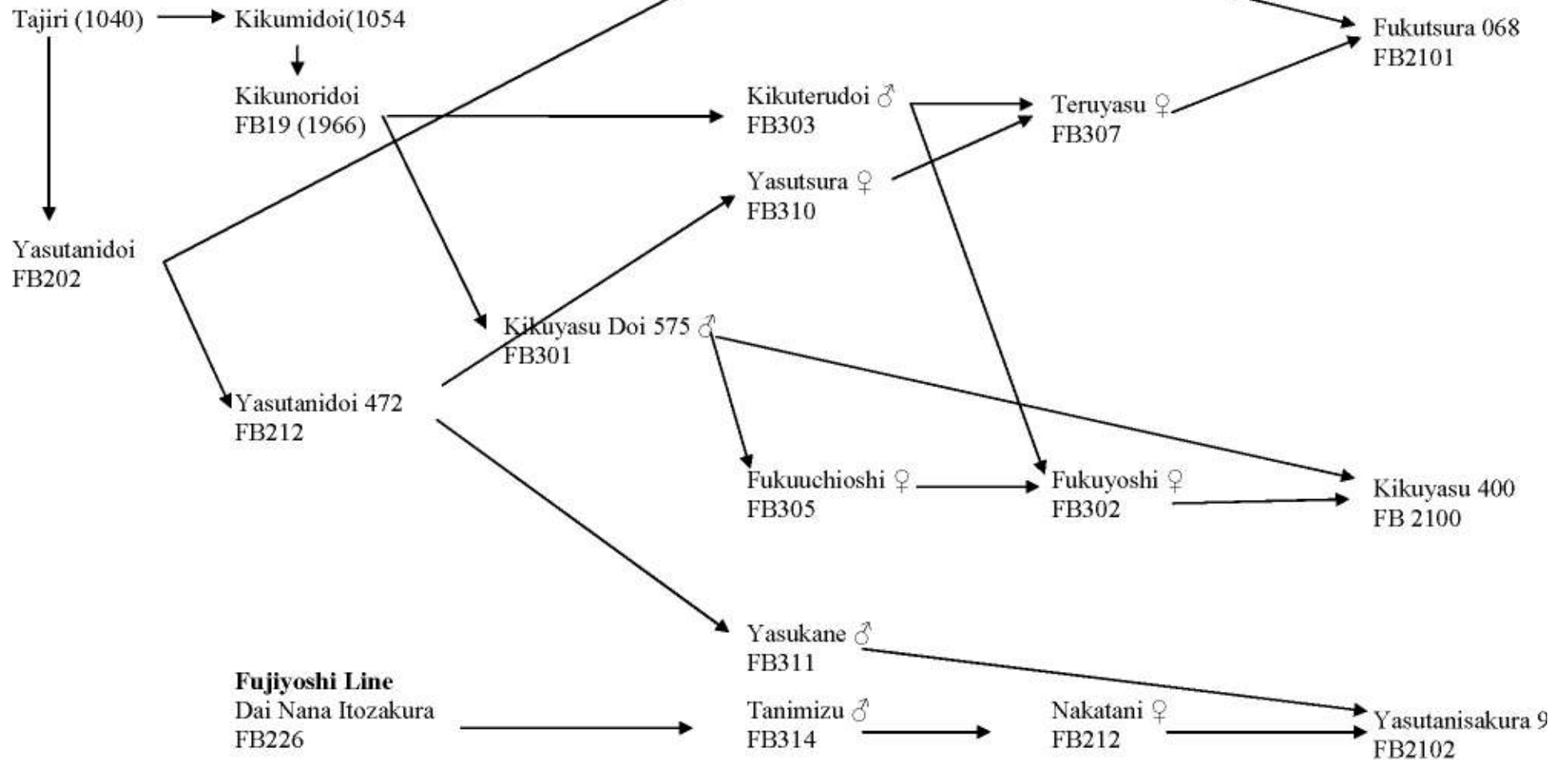


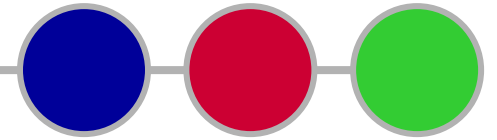
Parentage and Relationships for Takada Bulls



Parentage and Relationships for JVP Bulls

Tajiri Line





Genetic Lines of Wagyu in the U.S.

Charles T. Gaskins

Washington State University